

Our Collective Antagonisms; in three phases

Dalida María Benfield

Christopher Bratton

Center for Arts, Design, and Social Research

Antagonists: Algorithmic Resistances

February 9-10, 2026

MAC-USP

!

40 YEARS OF
NON-LINEAR
CONTINUITIES













Historical and political cartographies
mix with personal cartographies











RESEARCH RESIDENCY IN SPOLETO 2020

WKSHOP WINTER 1

WKSHOP 1 SPRING

2 WKSHOP SUMMER
2021

SOLO SHOW AND ARCHIVAL RESET IN CUBA WITH FERRAIA DE ARTE 2021

SUSTAIN ALUMNI NETWORK 2021

PUBLISH ON THE AXIS CENTER WEBSITE FALL 2021

RESEARCH RESIDENCY IN SPOLETO 2021

SPOLETO FESTIVAL SATELLITE EVENT

Digital publication Strategy
Proc. Digital platform

ONLINE EXHIBITION ONGOING

MIGRATORY TIMES
EXPERIMENTAL PRESENTATION IN PROCESS

DEPERSONING OF CONTEXT PLACE + TIME

Coordinate to Workshop group to develop volumes around Workshops

Establish Education Guidelines

DE-APRILINE EXPERIMENTAL PRESENTATION IN PROCESS

PUBLIC RESEARCH LAB

INDIGENOUS PAULICION AT VENICE BIENNALE 2021

HAVANA RENAISSANCE 2021

Research Fellows
Public Presentation of our design

CONTINUE RESEARCH
NOT A GLE OF EYES DEET AND LOW

DEPEND ON THE PLACE













STOP THE KILLINGS





An image of a Star Wars luxury liner (built out of LEGO)





WHAT ARE THE POSSIBILITIES

FOR CREATING PLURALIST PUBLIC

"SPHERES OF ACTIVITY" - AGONISTIC

How

Have IN DEMAND

SEDIMENTED

GROUPS

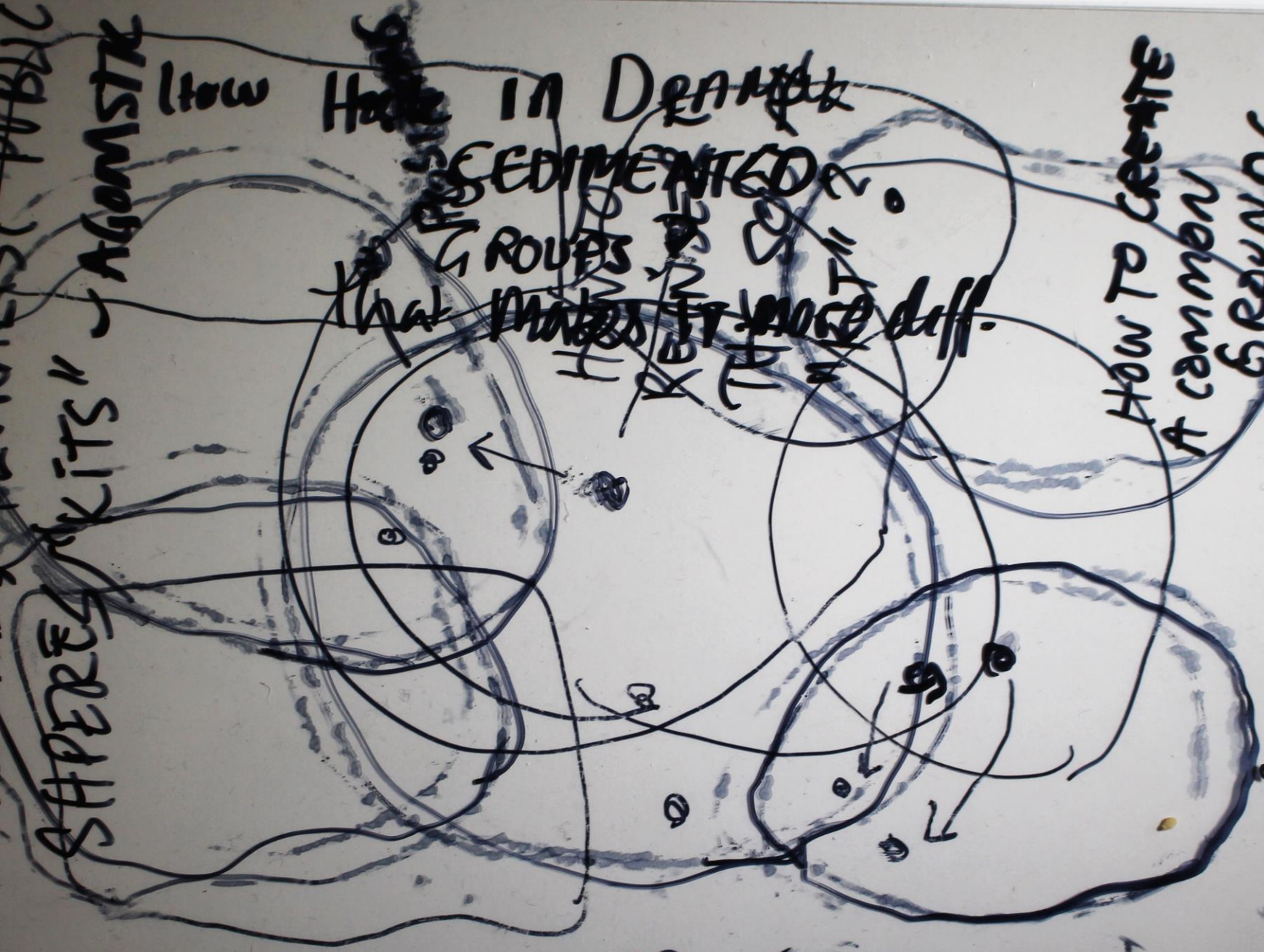
that makes it more diff.

~~TRANSFORMATION~~

How to create
A common
GROUND/
SPACE?

CONFLICT ZONES

TRANSFORMATION
















Silhouettes Part 2



Share



Watch on  YouTube

0

Salon with the Institute of (Im)Possible Subjects – Silhouettes: Migration, (Un)Documented, and Pedagogies – Part 2









CINÉMATOGRAPHIE

Appareil de Léon Lumière

Patent 1895

Magasin de Spécialité Cinématographique

Paris



Works:

Canal Zone/La Zona del Canal, 1992

These Boots Were Made For Walking, 2009

Hotel/Panama, 2010-2015

Ju-Nam, 1991

Translating Geographies of Displacement, 2017

Boston:Brazil, 2018

Silhouettes, Institute of Impossible Subjects, 2021

Women of Pilsen/Mujeres de Pilsen, 1989

Works:

Museum of Random Memory, 2016-2019

Los archivos del cuerpo/Body files, 2018-2022

Center for Arts, Design, and Social Research, 2017-
2026

Stop the Killings banner, Kiri Dalena/RESBAK, in
Tiempos Migratorios, SALASAB Biennale, curated by
Dalida Maria Benfield and Pedro Pablo Gomez
Moreno, 2019





and

then

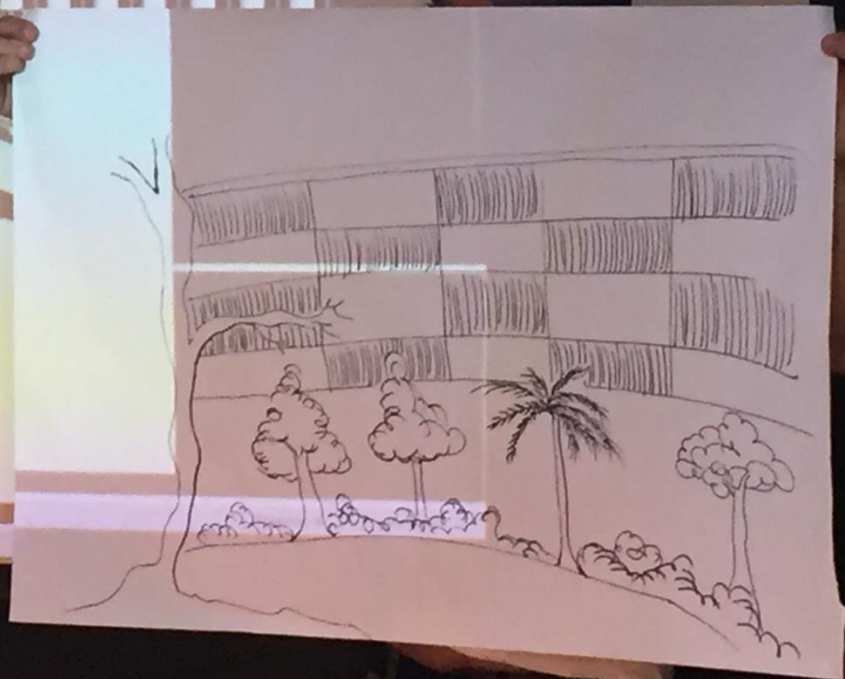
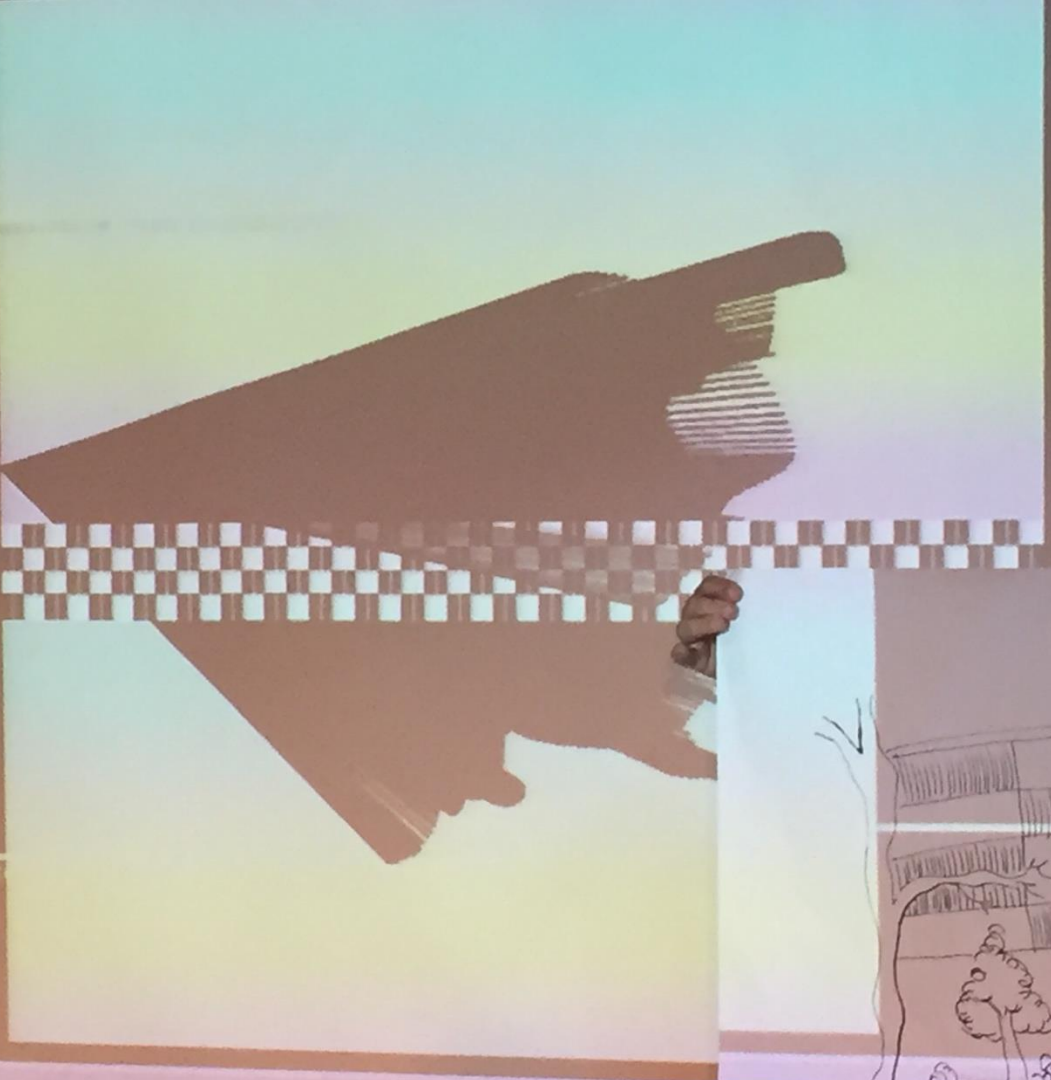
we

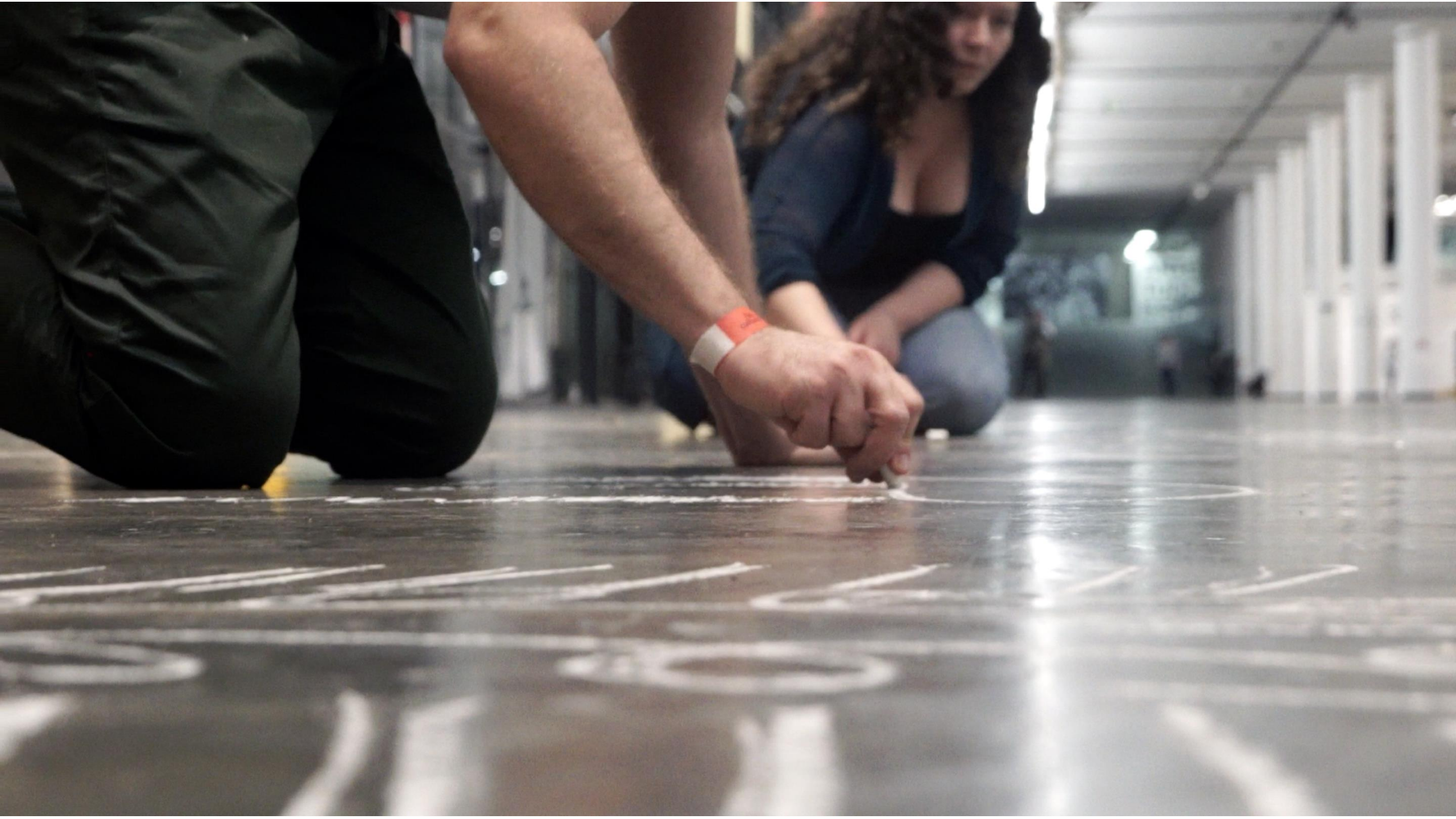
see

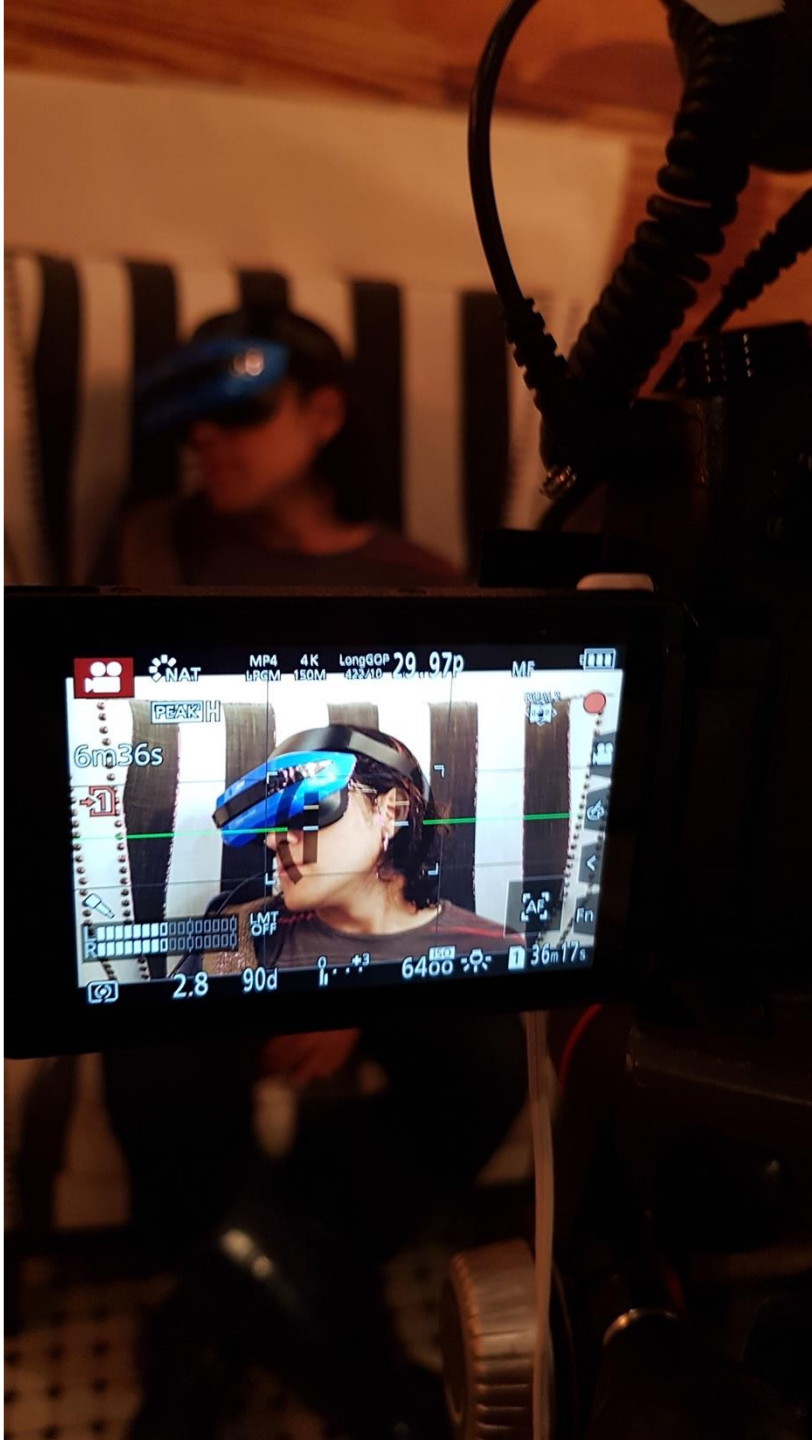


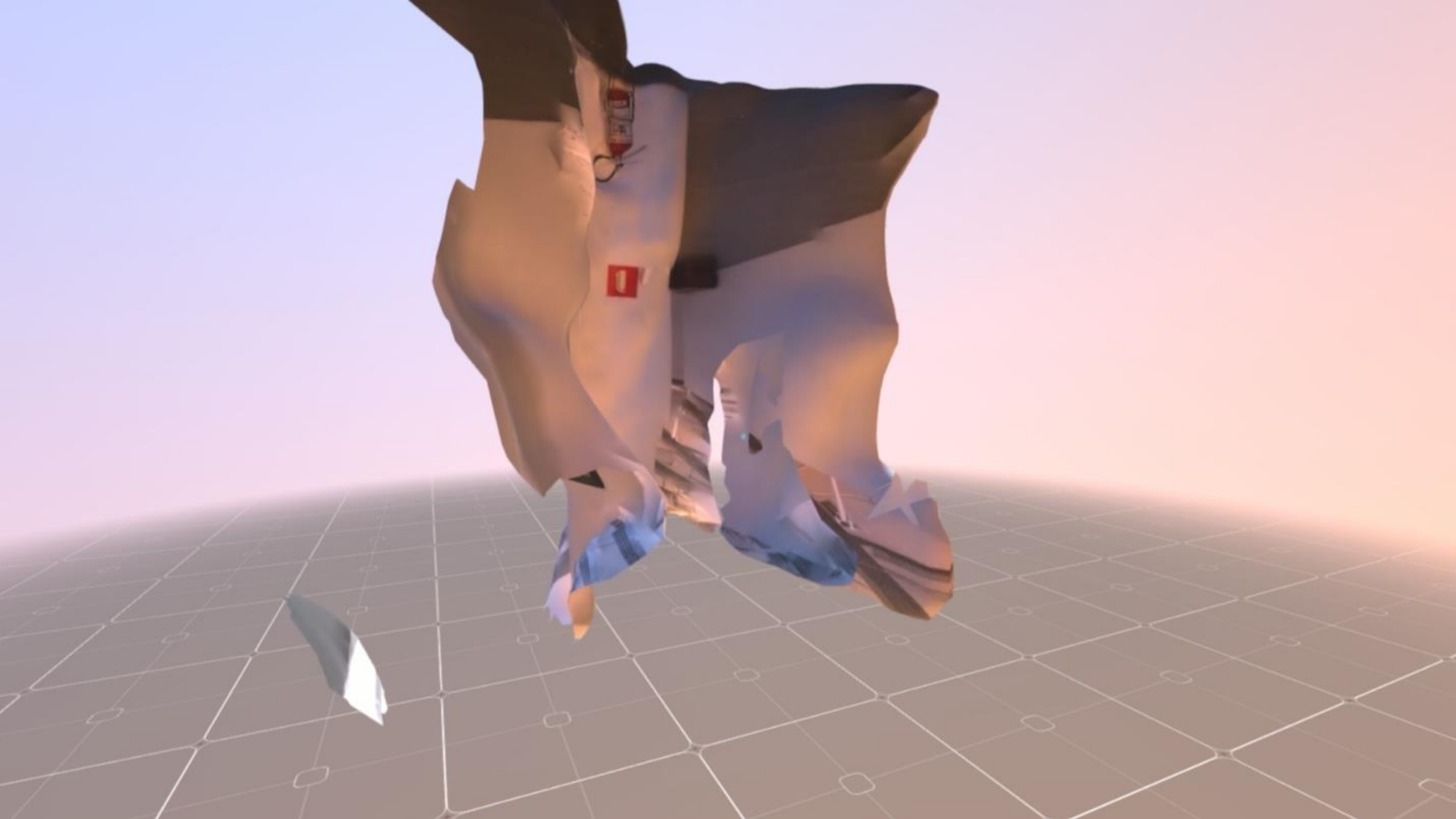
133
134
135
136
137
138
139
140
141
142
143
144
145
146
147
148
149
150
151
152
153
154
155
156

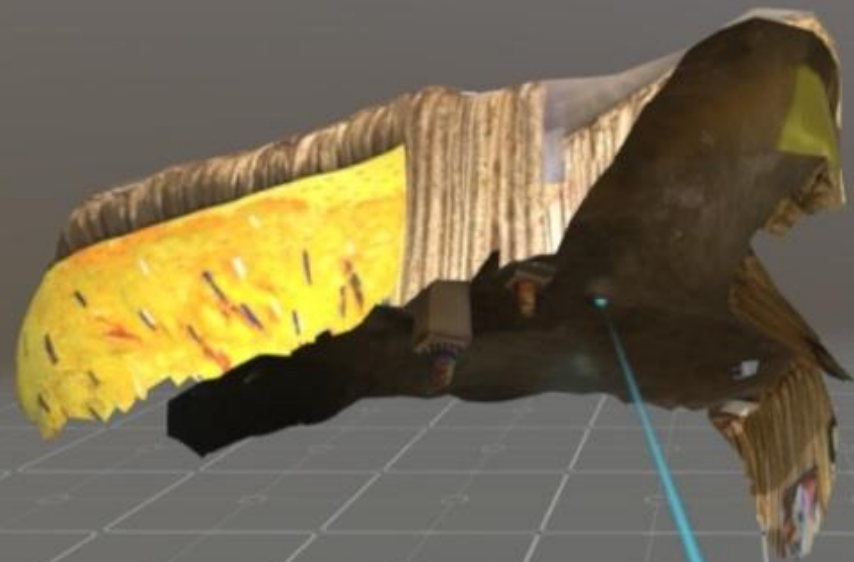
Support Unit













Afetando
Tecnologias,
Maquinando
Inteligências





Instituto de
Estudos
Avançados da
Universidade de
São Paulo





AFECTAN LOS
MAQUINARIAS
INTELIGENCIAS

AFECTAN LOS
MAQUINARIAS
INTELIGENCIAS









Thank you! Obrigada! Gracias!

dmbenfield@centerartsdesign.org